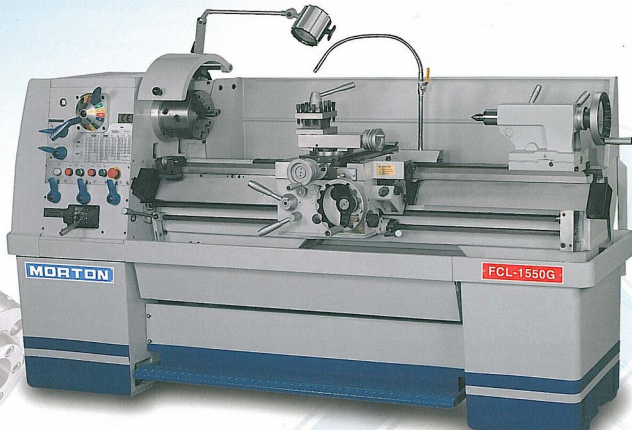
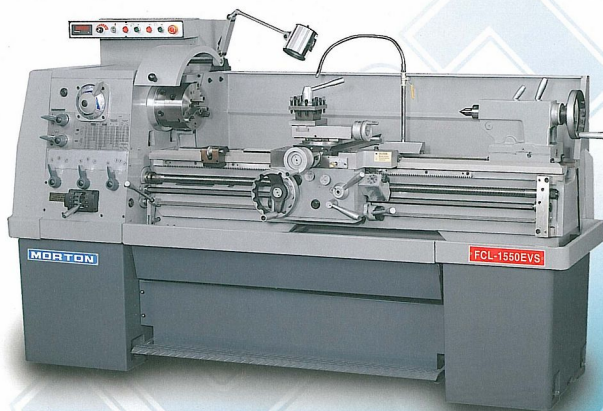


MORTON®

**PRECISION HIGH SPEED ENGINE LATHE
PRECISION AC VARIABLE SPEED LATHE
FCL-1550G / FCL-1550EVS**



• CE STANDARD

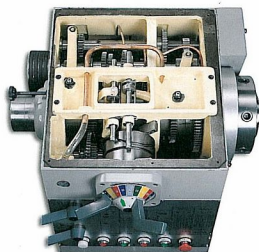


**THE LEADER IN QUALITY AND RELIABILITY
~ SINCE 1973 ~**



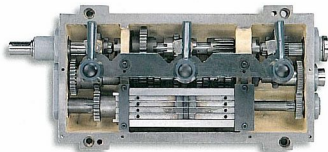


HEAVY DUTY SPINDLE



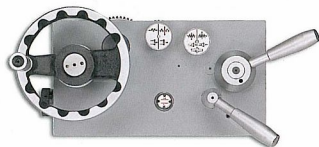
HEAD STOCK

- Dynamic balanced spindle.
- Spindle is supported by 3 points precision bearings-2 taper roller and ball bearing.
- Housing are properly stabilized and deflection free.
- All gears and shafts are made by chromium molybdenum steel with segmentation and precision ground.
- Build in mechanism clutches made by British matrix.
- Forced lubrication system.
- Nylon safety gears in end train.



UNIVERSAL GEAR BOX

- Induction hardened and ground gears and shafts.
- Wide threads cutting capacity for imperial, metric, module pitch and diametrical pitch.



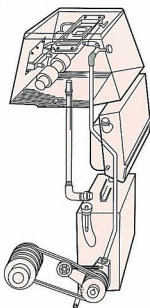
APRON

- Right hand side or left-hand-wheel available as required.
- Integrated automatic device for longitudinal & cross feeds, forward and reverse feeds
- Overload safety device.



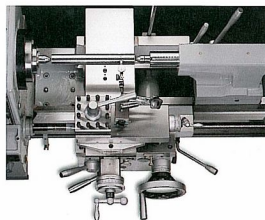
BED

- Bed Meehanite casting, vibration stress relieved.
- Induction hardened and precision ground bed ways.
- Precision hand scraped removable gap bed.
- Foot brake.
- Turcite B coating between the bed and carriage.



LUBRICATION

- Oil sight window for efficient checking oil action.
- Safety clutches at feed shaft lever.
- Dual reading dials.
- One shut lubrication for carriage and tops slide.



CARRIAGE & SLIDE

- Anti-float design, backlash eliminator fitted in cross slide nut.
- Safety clutches at feed shaft lever.
- Dual reading dials.
- One shut lubrication for carriage and tops slide.

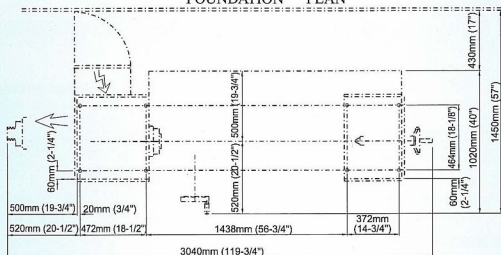
HEAVEY DUTY PRECISION ENGINE LATHE

MODEL		FCL-1550G	FCL-1550EVS
Capacity	Height of centers	190mm (7.48")	
	Swing over bed	φ 387mm (15.23")	
	Swing in gap	φ 610mm (24")	
	Swing over cross slide	φ 238mm (9.37")	
	Distance between centers	1250mm (50")	
	Width of bed	280mm (11")	
	Gap width in front of faceplate	265mm (10.43")	
Headstock & Main spindle	Spindle nose, Internal taper	D1-6, MT. No.6	
	Spindle center sleeve	MT. No.6 x MT. No.4	
	Spindle bore	φ 56mm (2.2")	
	Gear steps / Spindle speed: / Range	16 steps / 25 ~ 2000 R.P.M. Green 25 80 260 840 Yellow 33 108 350 1120 Red 45 140 470 1500 Blue 60 190 625 2000 "MATRIX" Disc clutch for Forward/Reverse	4 steps / - L 22 ~ 72 R.P.M. - M 70 ~ 235 R.P.M. - MH 235 ~ 780 R.P.M. - H 753 ~ 2500 R.P.M. Infinitely variable
Carriage	Length on bed / Width of carriage	484mm (19.05") / 450mm (17.71")	
	Cross slide travel	235mm (9.25")	
	Top slide travel	120mm (4.72")	
Threads & Feeds	Whitworth threads: / Kinds / Range	45 Kinds / 2 ~ 72 T.P.I.	
	Metric threads: / Kinds / Range	39 Kinds / 0.2 ~ 14mm	
	D.P. threads: / Kinds / Range	21 Kinds / 8 ~ 44 D.P.	
	M.P. threads: / Kinds / Range	18 Kinds / 0.3 ~ 3.5 M.P.	
	Longitudinal feeds	0.04 ~ 1.0mm (0.0015" ~ 0.04")	
	Cross feeds	0.02 ~ 0.5mm (0.00075" ~ 0.02")	
	Quill diameter	φ 59mm (2.322")	
Tailstock	Quill travel	127mm (5")	
	Taper of center	MT. No.4	
	Main spindle	A.C 5.5kw (7.5HP)	AC 5.5kW (7.5HP), +Inverter
Motor	Forced lubrication for HD.	-----	1/4HP
	Coolant pump	1/8HP	
Measurement	Weight (Net / Gross) Approx.	1450kgs (3195 lbs) / 1700kgs (3746 lbs)	
	Packing sizes	Length 2580mm (101.58")	
	Width x Height	Width 1120mm (44.1") x Height 1745mm (68.7")	

*We reserve the right to modify and improve above spcification without notice.

MORTON

FOUNDATION PLAN



(ONE PIECE SOLID STAND EQUIPPED WITH FRONT MOVEABLE CHIP TRAY)

STANDARD ACCESSORIES

- ▶ Main motor.
- ▶ Coolant system.
- ▶ Chip and coolant tray.
- ▶ Back plate for chuck.
- ▶ 4-way tool post.
- ▶ Two centers.
- ▶ Center sleeve.
- ▶ Tools and toolbox.
- ▶ Leveling pad-8 pcs.
- ▶ Halogen work lamp.
- ▶ Emergency stop switch.
- ▶ Steady rest w/ball bearing.
- ▶ Follow rest w/bronze tip.
- ▶ Face plate 300mm (12").
- ▶ Operational manual and spare parts list.
- ▶ Full length splash guard.

OPTIONAL ACCESSORIES

- ▶ 3 jaws scroll chuck 200mm / 250 mm (8"/10")
- ▶ 4 jaws scroll chuck 200mm (8").
- ▶ 4 jaws independent chuck 250mm/320mm (10"/12").
- ▶ 5C collet closer attachment.
- ▶ 5C collets (metric and imperial).
- ▶ Driving plate with dog.
- ▶ Carbide tipped center MT#4
- ▶ Live center MT No.4
- ▶ Inter-changeable insert live center MT No.4
- ▶ Bull nose live center MT No.4
- ▶ 13mm (1/2") drill chuck with key and chuck arbor.
- ▶ 13mm (1/2") keyless drill chuck and chuck arbor.
- ▶ Micro carriage stop.
- ▶ Turret type carriage stopper.
- ▶ Quick change tool post.
- ▶ Taper turning attachment.
- ▶ Tool post gridner.
- ▶ Digital readout system.
- ▶ Chuck safet guard.
- ▶ CE norms.



8Floor, No. 501, Section 2, Wu Chuan West. Road, Taichung, Taiwan 408, R.O.C.
 TEL:886-4-23816977 FAX:886-4-23813584.23813769
 E-mail:frejoth@tcts.seed.net.tw web-site://www.acra.com.tw